



4WD challenge

7 - 14 APRIL 2018

PLATINUM SPONSOR

Jarvis Toyota



Across the Great Australian Bight



Glovebox Manual 2018

GOLD SPONSORS



Tim Adams

CLARE VALLEY



MR. MICK

SILVER SPONSORS



Variety - the Children's Charity enriches the lives of South Australian children who are sick, disadvantaged or have special needs by providing practical equipment and programs.

Across the Great Australian Bight

Vehicle Preparation:

To ensure your vehicle meets the Challenge requirements, it will need to have high and low range, quality, all terrain light truck tyres and a UHF radio fitted to the vehicle. Most 4WD's are ready to go off the showroom floor.

Vehicle Requirements

To ensure your new vehicle is suitable, Variety recommends the following modifications as a minimum.

- All terrain tyres with a minimum 40% tread left
- Two spare tyres; one fitted to a rim, the other can be the rubber tyre only
- Tyre pressure monitors are highly recommended
- UHF radio with an external aerial installed (Handheld radios are not suitable for this event)
- Adequate rated recovery points on the front and rear of the vehicle.
- Two sets of car keys

This year's event is over 4800km return to Adelaide, so it is important your vehicle is serviced before the event.

Please ensure your mechanic/dealer checks your vehicle thoroughly including brakes, suspension and wheel bearing, wheel alignment and they are aware of the upcoming trip.

- Pre-trip service and inspection
- Two spare air filters and cabin filters to suit vehicle
- Common spare parts as your experience dictates



Vehicle and Recovery Equipment

- 9000kg Snatch strap and two 3000kg bow shackles
- Recovery tracks (Maxtraxs or similar)
- Shovel
- Tyre pressure gauge
- Fire extinguisher
- First aid kit
- Air compressor, however you may choose to pre-arrange to share with another entrant.
- Sand flags & rotating dust lights are highly recommend



Daily Vehicle Inspection

Your vehicle is the responsibility of the driver and not MR1 (Mobile Retrieval 1) to ensure it is in good working order. Please check the following items each day:

- Check all fluid levels, belts and hoses
- Check your air filter daily as these are a major concern when driving in convoy
- Check your cabin filter
- Look over tyres including the inside and outside tyre wall
- Use a small groundsheet and check under the vehicle for leaks, dents and build-up of grass or mud
- It is recommended to replace the air filter during the trip and before departing for home
- Andrew in MR1 is happy to run through the list if unsure what you are looking for



Tyre Pressure Recommendations

Don't forget to take two spare tyres and an air compressor to change the pressure in your tyres.

- Normal highway pressure is 40psi then:
- Fast gravel roads 28 - 30psi
- Limestone/Rocky country 20-25psi
- Beach and sand dunes 15psi

The 2018 route will change with terrain. Be prepared to change your pressures as we move across the Nullarbor on different terrains.

Briefing night

Tuesday 27 March 2018 6.30pm until 7.30pm

We won't keep you too long but it is important that you all join us on the night. We will be providing you with information about the trip, merchandise as well as celebrating your fundraising achievements.

Gold door panels will be awarded to the three highest fundraisers. This year we will also be awarding silver door panels.

Remember to be eligible for the highest fundraiser, deadline for banking is 5pm Friday 23 March here at the office!



Tyre Pressures – advice from Mobile Tyres 1 (MT1) Mike & Daniel

On the event, don't forget, if you have punctures etc. during the day, the MT1 team will be ready when you arrive at camp that night to mend your tyres but please drop your tyres off as soon as you arrive. We do like Mike and Daniel to have dinner before dawn.





The Event:

Camping, Equipment and Clothing

Don't forget to pack the following:

- Tent and swag/mattress
- Camping stretcher is a popular addition
- Pillows
- Table and chairs
- Torch and a table lantern
- Shovel & toilet paper (during day)
- Shade awning
- Drinking glasses (wine or others)
- Coffee mug for morning teas (no disposable cups this year)
- Drinks & nibbles (alcohol, cheeses, crackers, snacks etc.)
- 10L of drinking water per person
- Phone/camera – batteries & charger
- Rubbish bags **IMPORTANT: On the event please clean up your rubbish in bags and dispose in the rubbish trailer. Do not put loose rubbish into the trailer*
- Hat
- Sunscreen and mozzie repellent – IMPORTANT
- Wet weather jacket and warm jacket
- Theme day outfit
- Casual attire for final night
- Spare medication requirements
- Ear plugs



Catering

Variety is privileged to have the talented CAT team, lead by Steve "Cookie" Cooling, travel and cater for the event along with some fantastic local restaurants and community groups.



All meals are provided as part of your participation fee and include breakfast from day 1, morning tea, lunch, sunsets nibbles and dinner.

Please ensure you have completed the dietary form and our chefs will do their best to accommodate all special requests.

If you have a dietary requirement, the process is to make yourself known to the kitchen team or waiting staff to ensure you receive a suitable meal.

Meal Times

Times will be announced at the morning briefing and at check in each day. These vary depending on the days route and you should make yourself aware of these times.

When our CAT team is catering, you will need to bring the following to the million star dining room for dinner and breakfast (Please set this up as soon as you arrive at camp):

- Table and chairs
- Lantern
- Wine glasses/ coffee mugs and your own drinks

Morning tea, you will require your own mug and at lunchtime we also encourage you to pull out a chair and take a break in the shade.





Sunset Drinks

The bar will open one hour before dinner. You will need to bring your own glasses with you. Our sincere thanks to gold sponsor Tim Adams for donating the wine and to James at the Hilton Hotel for donating the beer for the sunset parties.

Ablutions and Showers

Our state of the art abluition blocks are a great investment for us but please treat them as you would your own. You must only use the toilet paper supplied, anything else will block the system.

Please speak to an official if there are any issues with any ablutions along the track so they can assist.

Showers are available when you arrive at camp each day until around 10pm. You will be informed if showers are available in the mornings.

When you get to camp each night, have your showers then sit and have a chat with your neighbours before coming over to drinks and dinner.

During the day, you may hear the call of the woods, however please ensure you bury all toilet paper and waste using a shovel. It is unacceptable to leave toilet paper on the ground and this has been a concern of past property owners and National Parks.

Rubbish

Rubbish is everyone's responsibility and we ask all entrants to pick up after themselves. Please ensure you carry rubbish bags and it would be appreciated if everyone can scout around to collect cans and bottles at the end of each night before bed.

Our SV crew provide a rubbish trailer at each night's campsite however they ask that you do not place loose items in the trailer. ALL RUBBISH IN THE TRAILER MUST BE IN BAGS.

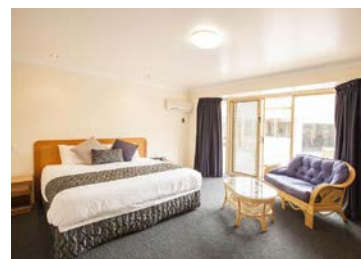


Accommodation

Accommodation is provided for all entrants on night 5 at Eucla and on Night 8 at Streaky Bay.

From the Night Check In, you will be directed to your motel for the night where keys can be collected from the Hotel reception.

Limited accommodation is available throughout the event on other nights and this is released in the 4WD Challenge Flier email prior to the event. If you have made other arrangements you must let the Event Chairman or Event Manager know of your arrangements.



Medical

We are fortunate to have four medical doctors on the event in OV10 and OV11. If you are looking for medical assistance at night, look for the flashing light that will show you their vehicle location or find an official to give you a location if staying in accommodation.

The Doctors also have breathalysers available and are more than happy to make them available for drivers to confirm you are fit to drive.

Please ensure you bring your own medication and complete the medical form prior to the event.

If you are first on scene of an incident, please ensure your own safety first and then the safety of the patients.

Using your UHF call for an official vehicle to your location (Kilometre mark or campsite/ accommodation). This is very important as they will be able to organise medical assistance through the Codan HF and RAD1.





Helicopter

The Commercial and General Helicopter is flying with us for the entire event and will be a great opportunity to see the track from a different and unique perspective!

We will be selling seats for each leg of the day and passengers will fly over the event as well as get to see some of the other unique features across the Nullarbor.

In case you are concerned about your driver or navigator, we have a few spare bodies on the event to take care of the car or navigation.

This is a great opportunity and we hope that you will all make the most of it. Importantly all money paid will go to helping the kids!

Auction Items

We encourage entrants to donate auction items to include in the main auction held during the event. We would like to keep items to one item per vehicle however if you have additional auction items please

discuss with the office as we are happy to make exceptions.

Auction items, where possible, need to be carried by the donor or provide the office with a high-



resolution image and 1 page flyer with details of the item or voucher.

These items can not be credited to your vehicles fundraising.

If you are the successful bidder, please pay and collect your item before the reunion.

Annual Themed Ball

The annual themed ball is held on the 15th June 2018 and is a fantastic evening full of fun, entertainment and wonderful food and beverages.

The ball is proudly sponsored by the Adelaide Convention Centre and Variety is able to contribute \$800 towards your fundraising for every table of 10 booked and paid for by fundraising cut off for the 2018 event.

It's a great opportunity to invite new friends and family to Variety and experience what all the fun is about!

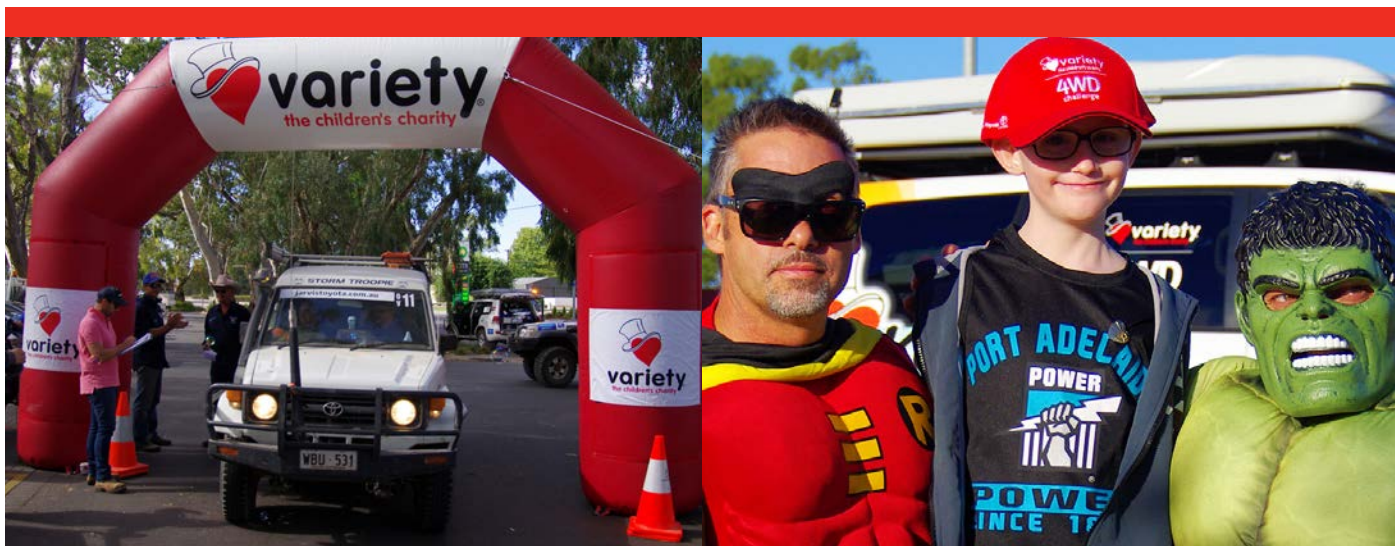
Leaving the event early?

Final night is when we announce our fundraising efforts, incoming chairman and celebrate the adventure we have all been a part of!

Variety book and pay for all meals and accommodation a month before departure. If you know you are leaving early and do not require final night accommodation or meals, please let the office know, as this results in less waste and more fundraising for the kids.

Once you have notified the office a month prior, you must notify the Chairman or the Event Manager when you depart the event from a check in or check out location.

If you require leaving the event for an unforeseen circumstance, please discuss this with the Chairman or Event Manager, as they will be able to assist with plans and transport if required.





Navigation:

Driving in Convoy

In essence, this means you are responsible for the vehicle behind you. It is important that your vehicle number is visible on the windscreen, (top passenger side) and the rear window, (top drivers side). Please collect and attach the decals before the event.

When you line up at the start or at the lunch check out, check the car numbers of the vehicle in front and behind you and make a note of these. This can change a few times over a morning/afternoon as vehicles pull over for one reason or another. Once you have left the start, radio the vehicle in front confirming your number for them. If you are pulling over, advise the vehicle in front that you are doing so and let them know the number of the vehicle that was behind you.

Example: Car 99, this is Car 16, behind you, followed by your message...

If you lose sight of the vehicle behind you, slow down a little and if they are still not within sight, use your UHF to call them.

- Always follow your route instructions, not only the car in front
- Use your indicators and drive with you headlights on
- If you need to stop on the track, check for good vision behind and in front
- Stay back out of the dust and drive to the conditions
- Announce obstacles such as oncoming traffic, cautions or difficult sections of track at your km mark eg 24.6km oncoming traffic
- In difficult terrain i.e. steep mountains, sand hills, or soft beach sand, one vehicle at a time only – call the following vehicle through by radio when you are clear
- If you become lost or disorientated, under no



circumstances should you leave your vehicle, stay by your radio and the officials will find you

Radio Etiquette and UHF Radios

- A working UHF radio is required in all entrant vehicles with an installed external aerial. The external aerial should be between 3 to 5DB range and mounted on the front bull bar or roof rack. The aerial should be clear of all other obstacles including sand flags, other aerials, shovels etc.
- The UHF radio should be directly wired to the battery or an accessory power. Accessory power can be found at the cigarette lighter of your car
- The selected channel will be allocated prior to the event and announced by the Chairman. UHF radio is a common system and can be heard by others both on and off the event up to 15km away, so be polite and have fun talking to each other. Know the vehicles both behind and in front of you and keep in contact with them on a regular basis
- 2018 Challenge Uses - UHF Channel 10



Trip Meter or Kilometre reading

Route notes will give you an instruction at a specific kilometre point such as 1.03km. This distance is from check out and you will need to zero at the start line of each route section.

You can use your car odometer, however there are now better options available on many android and iphones that will give you an accurate distance reading.

Download from the App store either Rally Tripmeter, RBNV Pro or one of the many apps available.

You will need to remember a charger for your phone as it will increase the battery use.

Following the Route Instructions

Please do not deviate from the route, if there is a need, please speak with an official first.

Route Instruction Legend

TR	TURN RIGHT
TL	TURN LEFT
SO	STRAIGHT ON
GR	GRID
GA	GATE
LF	LEFT FORK
RF	RIGHT FORK

The following are indicators only; your vehicle is your responsibility.

Orange or Pink Corflute with black "C"	= Caution
Orange or Pink Corflute with black "CC"	= Extreme Caution - *stop or give way
Red Ribbon	= Gate must be closed
Orange or Pink Corflute Arrow	= Disregard route instruction - follow arrows
App	= Approximate

Social Media

In the lead up and during the event, share your photos and videos with us using our dedicated hashtags on Facebook, Instagram or Twitter.

We love to share stories from our entrants, from preparation to the thrill of the Challenge. If you use the tags, we can find and share your posts with the Variety community.

Be sure to like and follow our Variety SA Motoring page at: facebook.com/varietySAMotoring

#Variety4WDChallenge & #VarietySA

Check In and Out

To ensure that no one is lost during the event, our officials record your departure and arrival at Check Out and Check In. Please ensure you slow down and stop, our officials will have the route instructions and important times and information for you.

If you DO NOT go through check in at lunch or night stop. You MUST go and notify check in you have arrived or pass a message to an official as our OVs will be looking for you.



If you get lost?

If you have not recognised two consecutive instructions on your daily sheets PULL UP.

If you are travelling on a two-lane road turn around and go back to the last instruction on your sheet that you know was correct - look for tyre tracks from other vehicles. Reassess route instructions.

DO NOT turn around if you are travelling on narrow tracks as you may encounter oncoming traffic. Call on UHF radio, the car that was travelling in front of you. If you cannot contact them, sit tight - we will find you.



Gates: the only rule is LEAVE IT AS YOU FIND IT

- *A gate with a red ribbon should never be left opened and unattended at any point in time.***
- If there is a red ribbon on a gate, you need to open the gate and if cannot see the car behind you the gate needs to be closed. Alternatively you can wait for the car behind you to go through and hand the gate back
- Accidental Damage: If by unfortunate chance, you damage any property fences, gates or wildlife, it is imperative that you notify the nearest official so whatever problem we have can be overcome. It only becomes a problem if we don't know about it

Private Property Owners

They have been exceptionally good to us for many years and are generally very happy to have a chat – please thank them as you pass by.

Please remember that permission is granted on behalf of Variety the Children's Charity and is only for the event. This means we trust our entrants not to return on your own holidays without obtaining permission for yourself and please respect in many situations the permission will not be granted.

Looking after the Environment:

We know you are all aware of the following but as a gentle reminder:

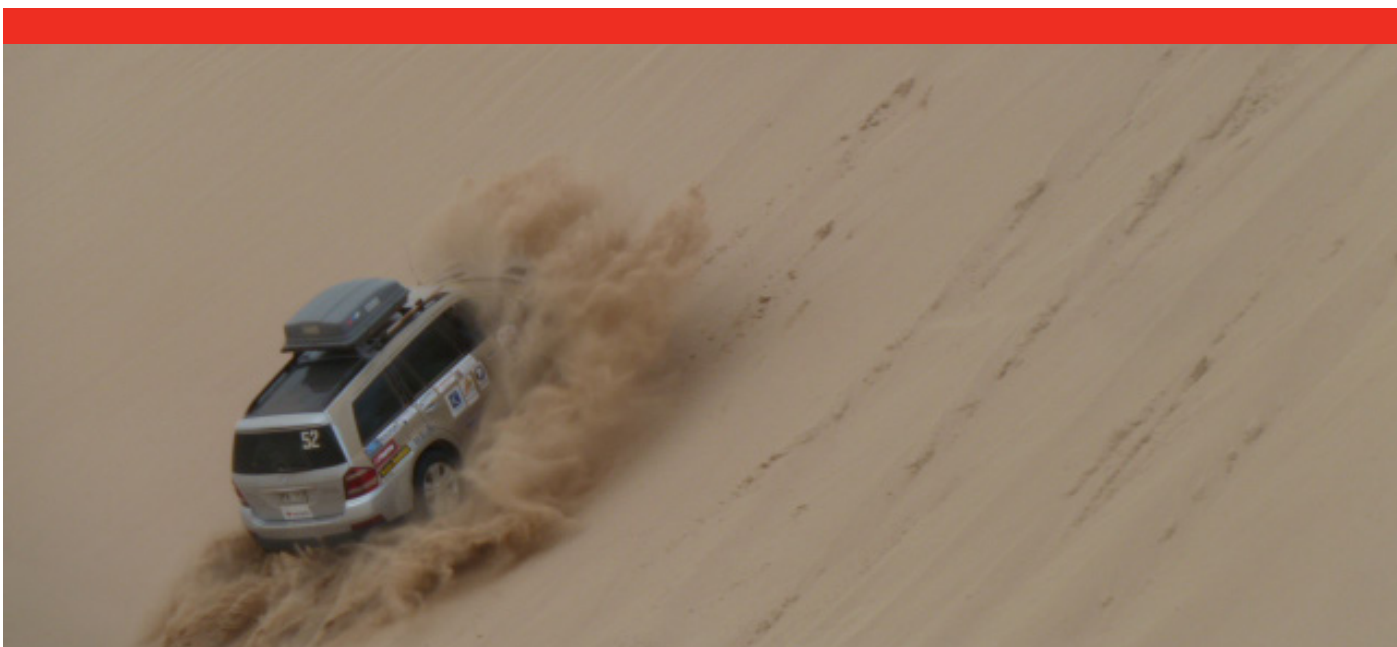
Please:

- Travel only on designated tracks, avoid damage when parking at morning teas, lunches or other fun stops
- Do not damage the flora and fauna. Ensure you leave each and every area as you found it
- Please ensure you have a good supply of rubbish bags – you will need to carry your own rubbish. Place empty bottles, cans etc in a plastic bag and in the rubbish trailer
- Bury ALL toilet paper and waste along the track

Road Rules Apply... Full STOP!

Please ensure you abide by all road rules before, during and after the event, with all the vehicles wearing the Variety decals, you are representing the brand and the charity.

- Seat belts must be worn at all times
- Drive to the conditions and stay within a safe speed for your car and experience
- Drivers it is your responsibility to ensure you are fit to drive
- Drink driving is not acceptable, if unsure it is better to check with one of our Doctors than the local policeman
- Fatigue is a large factor, break up the drive, share the driving and stay alert. Please be careful on the drive over and home





variety
the children's charity

We believe all kids deserve a fair go.

**Thank you for helping kids who are
sick, disadvantaged or have special
needs to be able to join in with
everyone else.**



CONTACT

Event Manager: Alex Richards
Address: PO Box 1235,
Marleston, SA 5033
Phone: (08) 8293 8744
Fax: (08) 8293 8725

Email: alex@variety.org.au
Facebook: www.facebook.com/varietyamotoring
Twitter: www.twitter.com/variety

www.variety.org.au