

Variety Livvi's Place Design Grant FAQs



What is the Variety Livvi's Place Design Grant?

The grant has been created to support the planning and development of inclusive playspaces within NSW and ACT communities. The program will support new and upgraded projects and is focused on helping local governments and communities develop plans that can be used for fundraising, grant submissions and funding requests.

Eligibility

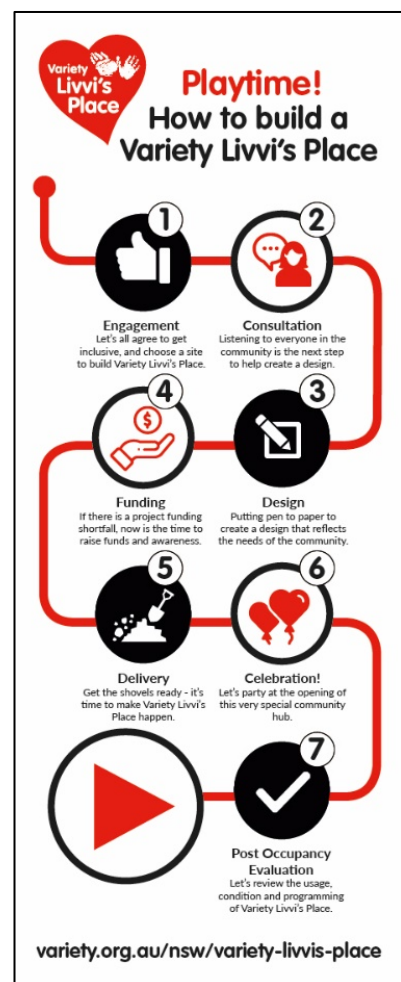
- All local government and incorporated community based organisations in NSW and ACT
- Applicants must have a confirmed allocated space in mind
- Applicants must be based and operating in NSW or ACT
- Applicants must demonstrate financial co-contribution to the project

What information does my organisation need to provide?

As the main contact, you will be asked to provide general information about your organisation, details on inclusive playspaces you would like to create in your LGA and how it will benefit your community.

What happens after an Expression of Interest is submitted?

First round is the EOIs and they are open until 27 May 2019. Variety will assess each EOI and a shortlist of applicants will be invited to put through a formal application.



What is the decision making process?

Shortlisted applicants will be invited to complete a formal application for the grant. Once this second round closes, Variety will assess and announce the successful applicants by the end of July 2019.

How will the Variety Livvi's Place Design Grant work?

Variety NSW/ACT will work with the successful applicant to develop a project plan and assist in the project inception, the engagement of a qualified Landscape Architect and community consultation process.

Variety will provide a design brief template and work with the successful applicant to embed site specific information for the benefit of the landscape architect.

A landscape architect will provide the successful applicant with a concept design for an inclusive playspace. This is a draft plan before the final design and documentation of the space.

How much is the grant worth?

This is dependent on the site and how many iterations of a concept plan are needed. A concept plan can cost anywhere from \$15k to \$60k.

Will there be guidelines for the grant?

Yes. These will be made available to applicants that are shortlisted for the second round.

Variety Livvi's Place Design Grant FAQs



When will a commitment to the project need to be made?

Commitment is locked in when a funding agreement is signed by both parties. This will take place after the successful candidates pass through the second round of the Design Grant application.

What other ways does Variety support kids and community organisations?

For more information about how Variety can support individual kids or organisations, please check our website [here](#) and contact the Kids Support Team on kidssupport@variety NSW.org.au if you have any questions.

Who can I contact for more information on Inclusive Playspaces or this Grant?

For more information, please contact our Inclusive Play Project Manager, Lisa on lisa.whinnen@variety NSW.org.au